

### The Ludham Community Archive Group

The group came together during the Jubilee year of 2002 to celebrate it through a community event in the village. The result was a textile triptych, which was completed with the collaboration of over 100 residents of the village. It is now on show in the Parish Church of St. Catherine's. We were supported in this enterprise by the Arts Officer of North Norfolk District Council, Brenda Seymore, and by our Art Tutor, Nicky Maule.

While the project was in progress we introduced local walks, led by knowledgeable villagers, to learn more about the community in which we live. Winter walks also evolved from this. We were also introduced to a method of recording the information that we were acquiring during this process and it was at this point that the archive aspect of the project really began.

Ludham Archive is held on computer and continues to expand as further information comes to light. Photographic, pictorial and a variety of other images, supplemented by reminiscences form the basis of the archive. In addition, many people have been interviewed and the results recorded. All of this is seen as a beginning of what should become a continuing process to record the evolution of a changing community. Archive materials are open to access by villagers and can be seen at regular evening meetings. Dates of meetings can be found in the monthly parish newsletter.

The archive provides the source of material to make publications available as CD Rom and other visual media, as well as pamphlets and booklets.

## TAPESTRY PANELS - BOOK 2

### THE ORIGINAL SIDE PANELS BY KATHIE JONES

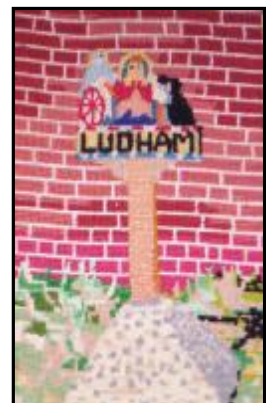
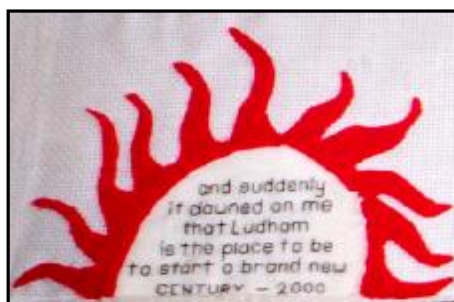
This booklet contains all the material on the ORIGINAL two side panels of the TEXTILE TRIPTYCH which is on display in Ludham Church. It contains contributions of embroidery and painting by 84 local people.

The full list of contributors is as follows:

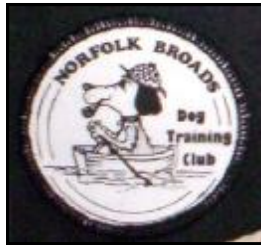
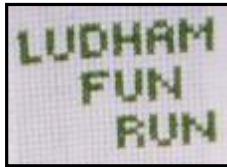
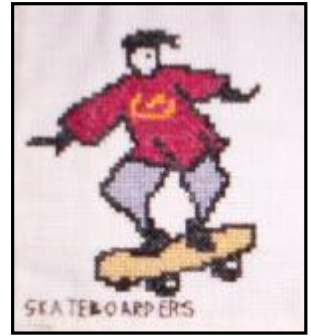
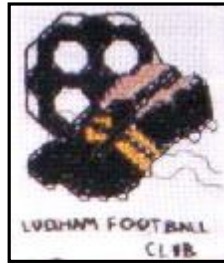
Lynne Barber  
 Hazel Brook  
 Kathy Bugden  
 Marie Cholerton  
 Linda Cruickshank  
 Brenda Dennis  
 Noel Dennis  
 Louisa Dowe  
 Mike Fuller  
 Helen George  
 Iris Gibbs  
 Jackie Grey  
 Evelyn Henry  
 Kathie Jones  
 Rosina Jones  
 Eileen King  
 Jackie Mayle  
 Anne Moffat  
 Kathleen Parkes  
 Maureen Parkes  
 Christina Pope  
 Daniel Simmonds  
 Brenda Standen  
 Jane Stevens  
 Lorraine Stuart  
 Sue Trivett  
 Margaret Watts  
 Carol Willoughby

Alison Yardy  
 Mrs Tennant  
 Amy Alden  
 Atlanta Amis  
 Jessica Carter  
 Connor Dunsford  
 Daniel Edmondson  
 Alex Harvey  
 Jack Helsdon  
 Alex Makepeace  
 Rhiannon Trenton  
 Kieran Westlake  
 Leah Abigail  
 Sophie Atbrow  
 Eve Andrews  
 Alister Brenin  
 Bethan Emtage  
 Timothy Fulford  
 Alice Hamilton  
 Carissa Jermy  
 Emily Lambert  
 Toby Lee  
 Joseph Parry  
 Eleanor Poole  
 Christopher Purton  
 Isobel Sale  
 Charli Smith  
 Alexander Turner

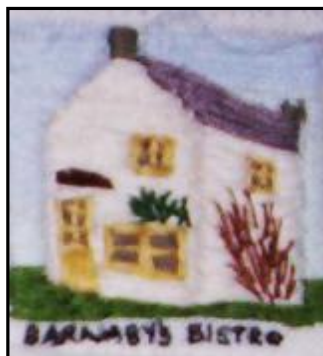
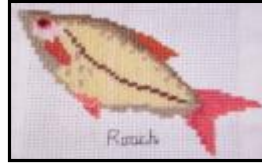
Mrs Wright  
 Mrs Morter  
 Abbie Alden  
 Stephen Dennis  
 Louise Emtage  
 Emily Green  
 Ryan Monsey  
 Lee McCrory  
 Lewis Partridge  
 Charlie Peake  
 Luke Priestley  
 Melissa Symonds  
 Ryan Taylor  
 T. J. Webb  
 Dean Westlake  
 Hannah Bates-Jones  
 Luke Bensley  
 Joseph Brindle  
 Lewis Dunsford  
 Cameron Durrant  
 Kathryn Edmondson  
 Lauren Hudson  
 Olivia Jermy  
 Georgina Kidd  
 Charlie Shipstone  
 Christopher Turner  
 Richard Williams  
 Tom Webb

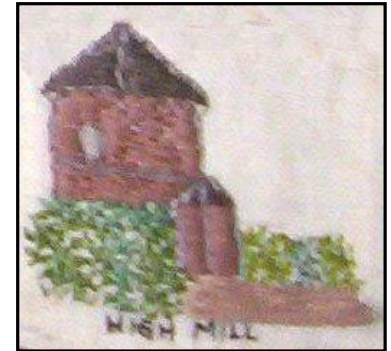
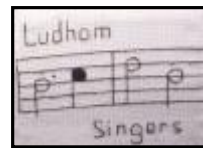












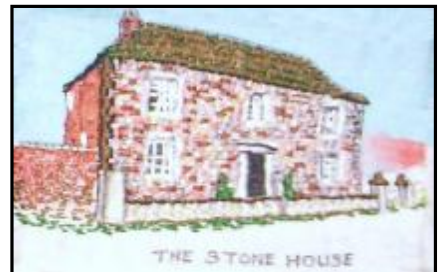
Two Samples Of Hand Made Felt



Ludham Surgery



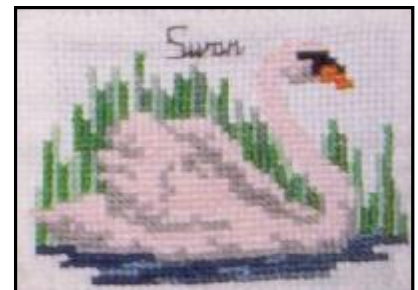
Rolls Garage

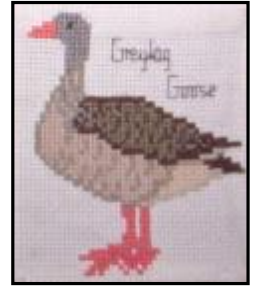
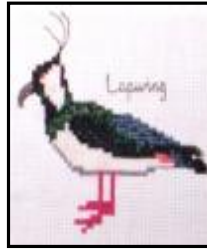
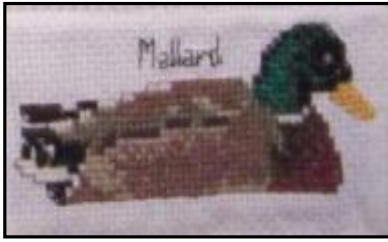






Two Scenes At Ludham Bridge

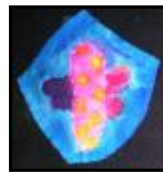
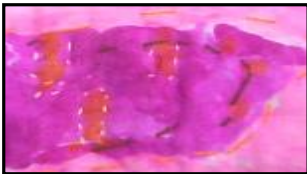




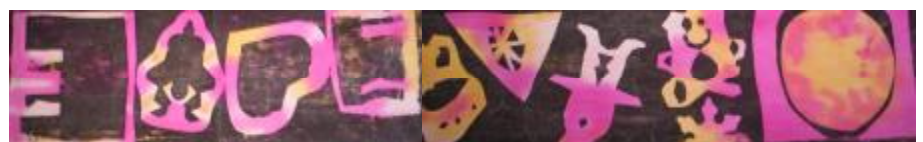
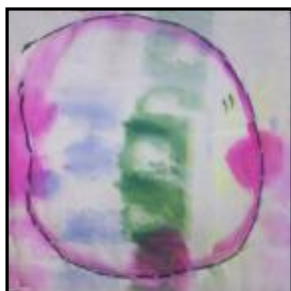
Three Pottery Plaques



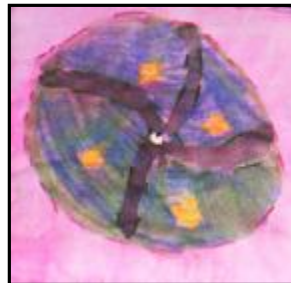
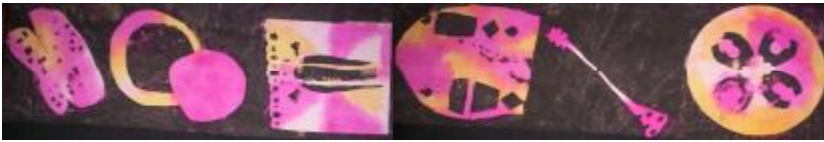
# Fabric Painting and Printing



Royalty At The Dutch House



# More Fabric Painting and Printing



We are grateful to everyone who has supported us in this project, particularly our local sponsors who are listed below.

Sponsors

- Neil Smalley - Landscape Painter in Oils
- A. J. Gower & Son (Rodney Wright)
- Throwers of Ludham
- Ludham Marine (John Brinded)
- "Ryder Marine UK" Bosuns Locker Chandlery
- Emily Rose Wild Life Trips
- The Bridge Stores
- Wayfarers Restaurant
- Environair Stsyems
- Ludham Garages Ltd.
- East Coat Leisure Ltd. High House Farm, Ludham
- Swallowtail Boatyard, Colin and Wendy Buttifant & Son
- Flowers By Kim
- Womack Staithe Trust

Tapestry Panels Book 2  
Written by Kathie Jones  
Re-Edited by Jon Simpson, 2015.



Supported by the European Agricultural Guidance  
& Guarantee Fund & Defra

